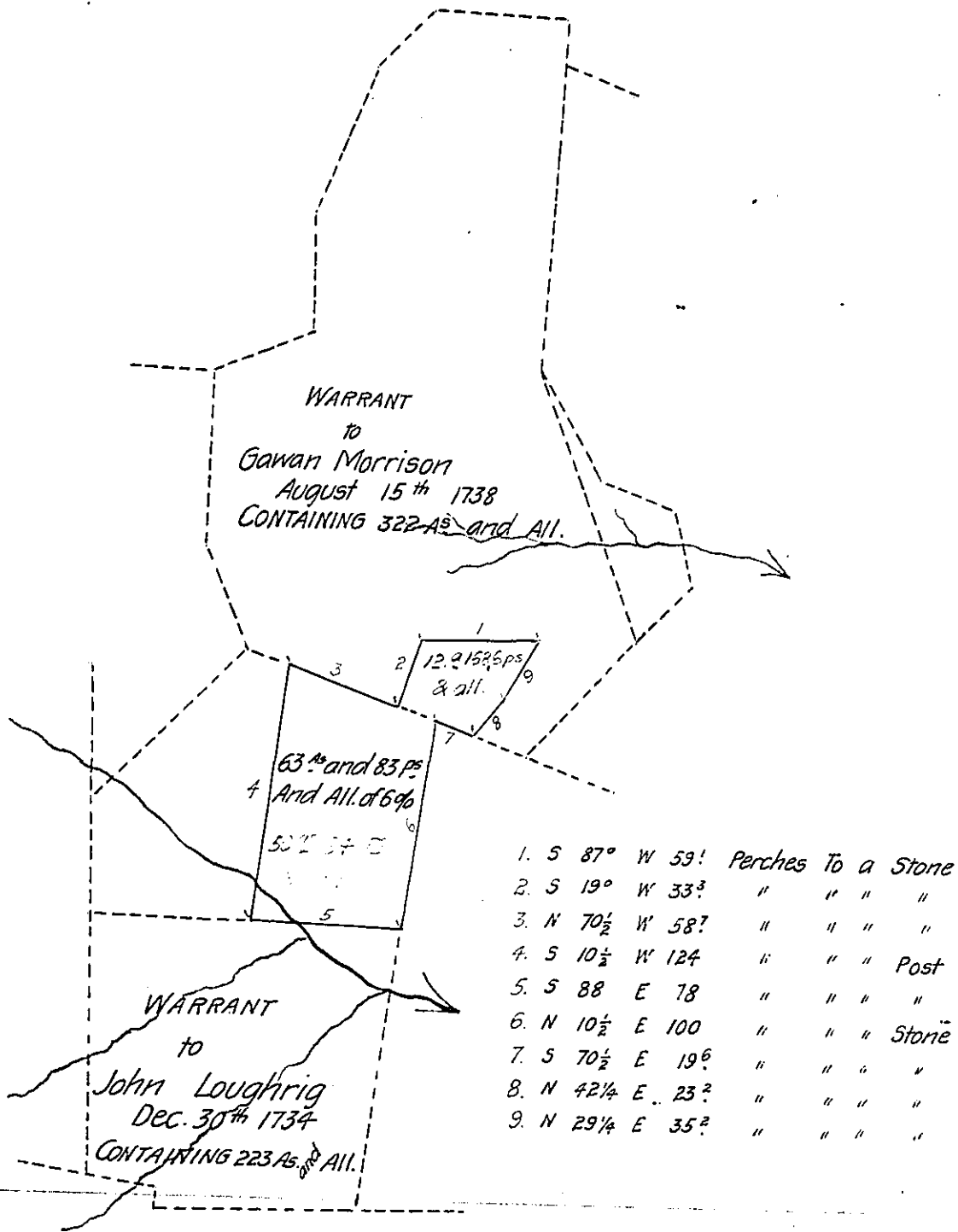


Scale  
100 PERCHES TO 1 INCH



A Draft of a tract of land situated in the Township of East Nottingham and County of Chester containing Sixty-three acres Eighty-three perches and allowance of six per cent. for roads, etc. Surveyed for Wm T. Fulton Esq. the 29<sup>th</sup> day of December 1900 it being part of <sup>2</sup> larger tracts containing <sup>1</sup> Two hundred and Twenty-three - <sup>2</sup> Three hundred and Twenty-two - acres — perches and allowance, originally surveyed in pursuance of a warrant granted to <sup>1</sup> Jno. Loughrig <sup>2</sup> Thirtieth - day of <sup>1</sup> December — 1734 <sup>2</sup> Fifteenth - day of <sup>1</sup> August — 1738

Examined and approved Jan. 31 = 1901.

W. A. Mac Donald

County Surveyor.

To James W. Latta, Esq.,

Secretary of Internal Affairs

IN TESTIMONY that the above is a copy of the original remaining on file in the Department of Internal Affairs of Pennsylvania, made conformably to an Act of Assembly approved the 16th day of February, 1833, I have hereunto set my Hand and caused the Seal of said Department to be affixed at Harrisburg, this fifteenth day of November 1905

*James W. Latta*  
Secretary of Internal Affairs.